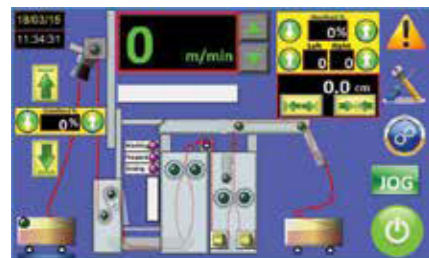


KNITHYDRO



For high quality treatment of tubular knitted fabric.

KNITHYDRO

Continuous hydroextraction, minimum tension speed, up to 80m/min Also with : detwisting, alignment of courses and wales. Flat feeding, stretching, folding.

TREATMENT ON KNITHYDRO

After the fabric is untwisted and laid flat, compressed air blows the fabric into a balloon to achieve the alignment of courses and wales. Then a powerful and constant hydroextraction is effected between two rollers. The rate of hydroextraction is constant and reproducible, varying from 70 to 85 % according to speed, water temperature, pressure of the hydroextracting rollers and type of fabric being processed. Magnetic stretcher with wheels and positive feeders compensates for dyeing elongation and restores the loops to their original pattern.

Finally, the fabric is fed without tension onto a conveyor and folding to trolley by the plaiter.

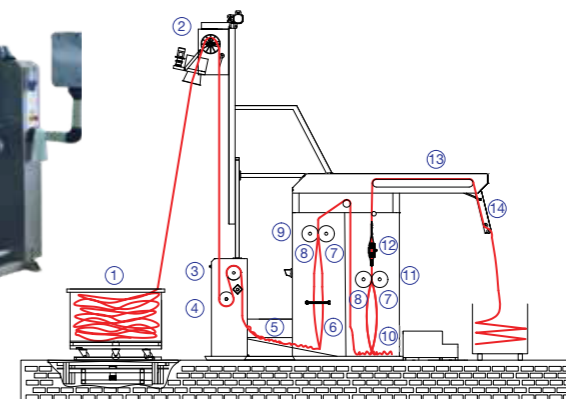


Technical Data	Unit	Single Padder	Double Padder
Working speed up to	m/min	80	80
Working with	mm	1.500	1.500
Length	mm	4.260	5.400
Width	mm	2.540	2.540
Height	mm	5.100	5.100
Lift	mm	5.100	5.100
Machine	mm	3.000	3.000
Weight	kg	4.000	5.000
Installed electric power	kW	7,6	10
Compressed air consumption	m³/h	10	12
Water Consumption	l/h	50 to 500	50 to 500

DOUBLE PADDER



Description



1	Turning plate	8	Control and watering bars
2	Twist detection head controlling the turning plate	9	Hydroextraction rollers
3	Hole detection	10	Constant level vat for chemical stuff of impregnation
4	Ring stretcher	11	Impregnation rollers
5	Automatic fabric loading device (J-Box)	12	Magnetic stretcher
6	Alignment of courses and wales balloon	13	Transport conveyoyr
7	Air blower	14	Plaiter

SINGLE PADDER

