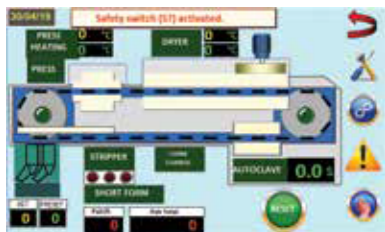


SOCKMAGIC

1.000
PAIRS/HOUR



ADVANTAGES

- * New and higher performance drying area
- * Reduced consumption of steam and electricity
- * Coloured touchscreen control panel
- * Selective programming of the sock stack height
- * Servo-motor driven autostripper
- * Finishing from baby to extra large sizes of socks and half-hose
- * Boarding of articles for customers without steam facilities
- * Finishing of wet loaded articles,
- * Long-lasting steady boarding,
- * Customer's satisfaction on qualitative and quantitative requirements.

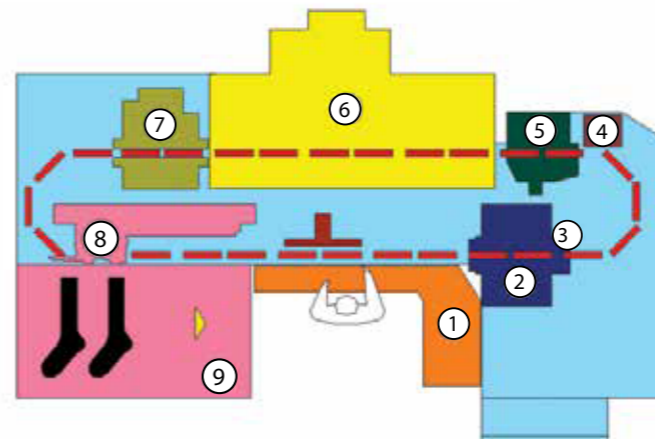
Faster, stronger, efficient and reliable

Technical Data	Unit	Value
Length	mm	4.800
Width	mm	2.800
Height	mm	3.000
Weight	kg	4.200
Compressed air consumption (6bar)	m ³ /h	9
Steam consumption autoclave	kg/h	18 to 22
Steam consumption dryer	kg/h	15 to 25
Average electric consumption	kW	2
Temperature of drying air	°C	150
Press temperature	°C	150-200
Production	pairs/hour	1.000

28 FORMS

SOCKMODULE

600
PAIRS/HOUR

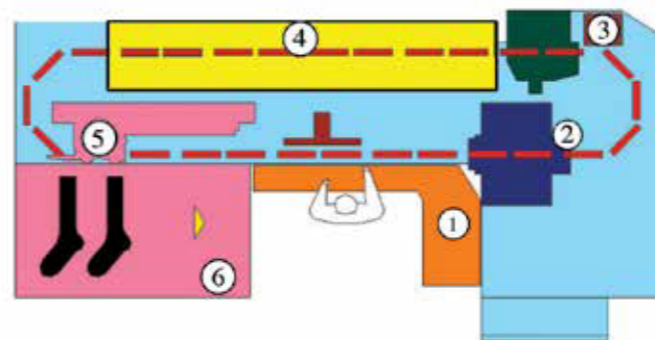


1	Standard sock storage vat
2	Horizontal steaming shells for steam treatment up to 3 bar
3	Waterspraying or atmospheric steaming unit (Optional)
4	Automatic oiling of guiding rails
5	Automatic rib end length control
6	Steam or electric heated drying tunnel
7	Press
8	Automatic stripping of articles with precise stacking per pairs
9	Outlet conveyor of the stacks of articles with 3 different directions

24 FORMS

SOCKPRESS

1.000
PAIRS/HOUR



1	Standard sock storage vat
2	Water spraying or atmospheric steaming unit
3	Automatic oiling of guiding rails
4	Press (6 forms)
5	Autostripper
6	Outlet conveyor of the stacks of articles with 3 different directions