

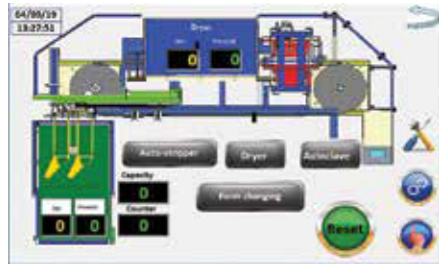
# SOCKSPEED

**1.200  
PAIRS/HOUR**

# BOARDING

# FOR ANY KIND OF

# SOCKS



Best Cost Efficient Machine Ever

Technical Data	Unit	Value
Length	mm	4.000
Width	mm	1.400+ conveyor (1.500)
Height	mm	3.120
Weight	kg	3.600
Average electric consumption	kW	1.2
Compressed air consumption	m³/h	8
Compressed air pressure	bar	6
Steam consumption	kg/h	24
Max. Capacity	pairs/hour	1.200
Process time at max. capacity	seconds	0,5
Dryer temperature	°C	160 max.
Form thickness	mm	4,2

# 24 FORMS

## BEST QUALITY BOARDING RESULT WITH LOWEST ENERGY CONSUMPTION

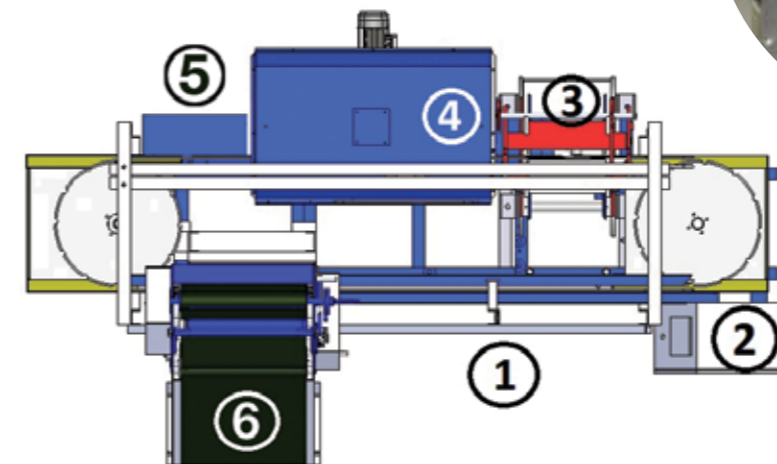
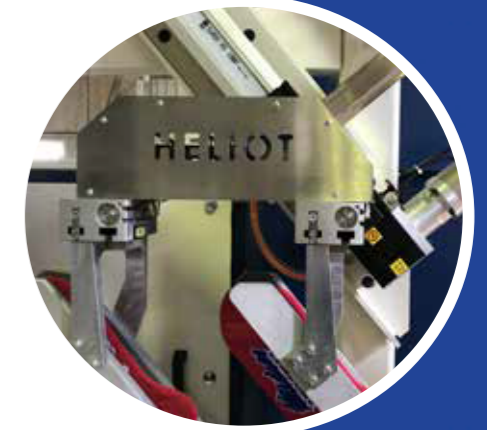
**LOADING :**  
2 operators can load up to 1.200 pairs of socks per hour.

**AUTOCLAVE :**  
0,5 seconds process time at top speed (1.200 pairs per hour) gives the perfect quality specially for sport socks, invisible socks and others. Only 11 kg steam consumption in the autoclave!  
New simple and rapid autoclave provides to run the machine at higher speed. Therefore SOCKSPEED achieves 1.200 pairs per hour capacity easily.

**DRYING:**  
Powerfull dryer has improved air circulation by reducing the steam consumption. It consumed only 13 kg steam per hour!

**STRIPPING :**  
Two options to strip the socks from forms:  
- Belt type autostripper  
- Gripper type autostripper

**OPTION :** Press



## Description

1	Loading area
2	Panel board
3	Autoclave
4	Drying chamber and DRY+
5	Press
6	Gripper or Belt stripper



## SOCKSPEED: LOWEST ENERGY CONSUMER

- \* Maintenance free, very rapid autoclave
- \* Centralised, automatic lubricating is more simple, more efficient and more reliable.

**ONLY 24 kg TOTAL STEAM CONSUMPTION!**  
**ONLY 1,2 kw TOTAL ENERGY CONSUMPTION!**

SOCKS FINISHING



www.heliotinternational.com

SOCKSPEED