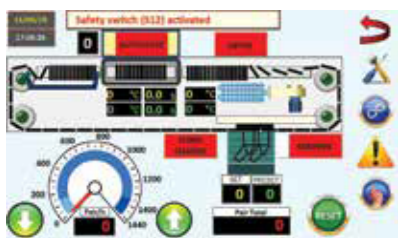


# SOCKSTEAM HS

**1.440**  
PAIRS/HOUR



A SPEEDSTER LEGEND

Technical Data	Unit	Value
Length	mm	5.200
Width	mm	1.500 + conveyor (1.500)
Height	mm	3.120
Weight	kg	6.000
Average electric consumption	kW	2
Compressed air consumption	m³/h	12
Compressed air pressure	bar	6
Steam consumption	kg/h	30 to 60
Max. Capacity	pairs/hour	1.440
Process time at max. capacity	seconds	10-15
Dryer temperature	°C	160 max.
Form thickness	mm	4,2



www.heliotinternational.com

# 120 FORMS

MINIMUM ENERGY CONSUMPTION, BEST PRODUCTIVE OPERATION

**LOADING :**

2 operators can share the manual loading position for a production up to 1.440 pairs of socks per hour.

**AUTOCLAVE :**

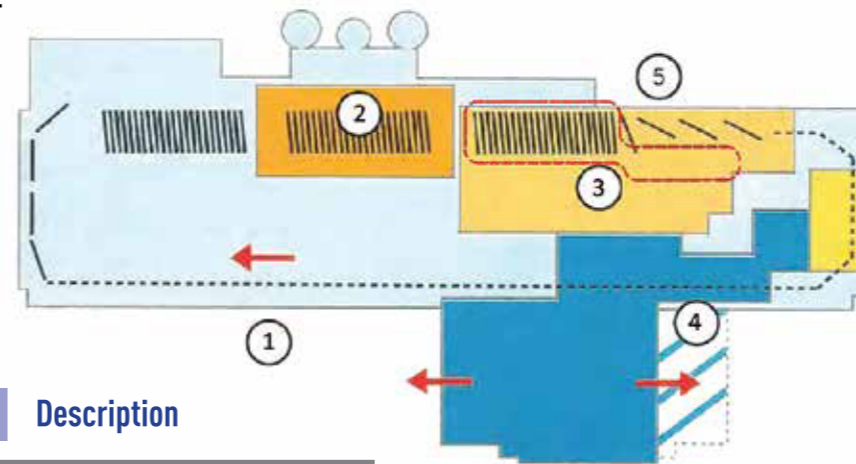
The temperature and the processtime for each of the 4 batches of 30 forms is independetly adjustable thus allowing fine possibility of separate treatment for each batch inside the autoclave. For maximum production the real pressurized steam treatment time is approximately 10 to 15 seconds at top speed. All the treatement data can be reproduced and ensures a consistent very high quality production.

**DRYING:**

The steam treatment is followed by a powerful drying process by means of hot air circulation. Economizer : up to 30% energy saving from drying process.

**STRIPPING :**

Grips seize the treated socks, two by two, and strip them from the forms while raising the socks toward the racket. The grips then open and free the socks, allowing the racket to push them flat on to a horizontal stacking conveyor. The socks, stacked to a programmed number are then evacuated on to conveyor advancing forward.



**Description**

1	Socks loading
2	3 bar vertical autoclave
3	Drying chamber
4	Servo driven Autostriper
5	Economizer (optional)



**SOCKSTEAM HS : BEST QUALITY, MAXIMUM PERFORMANCE**

- \* Counterweight safety device for the up and down movement of the autoclave
- \* Driving of forms by mechanical transfer.
- \* Improved stacking of the stripped socks thanks to increased stability provided by the servo-motor drive on the stripper.
- \* Longer pressurized steam treatment time for a deeper and more efficient treatment.
- \* Centralised automatic lubricating, more simple, more efficient and more reliable.

The 120 forms, without holders and easily changeable, make easier the treatment of different sock styles within each batch without losing time. The same forms are used on other HELIOT machines. The SOCKSTEAM HS is designed for intensive work under safe conditions. The machine is equipped with a programmable controller which controls permanently the safety device, stops the machine in case of defect and displays the cause of the fault.

# SOCKS BOARDING FOR SOCKS

WITH 3 BAR  
STEAM  
PRESSURE



SOCKSTEAM HS