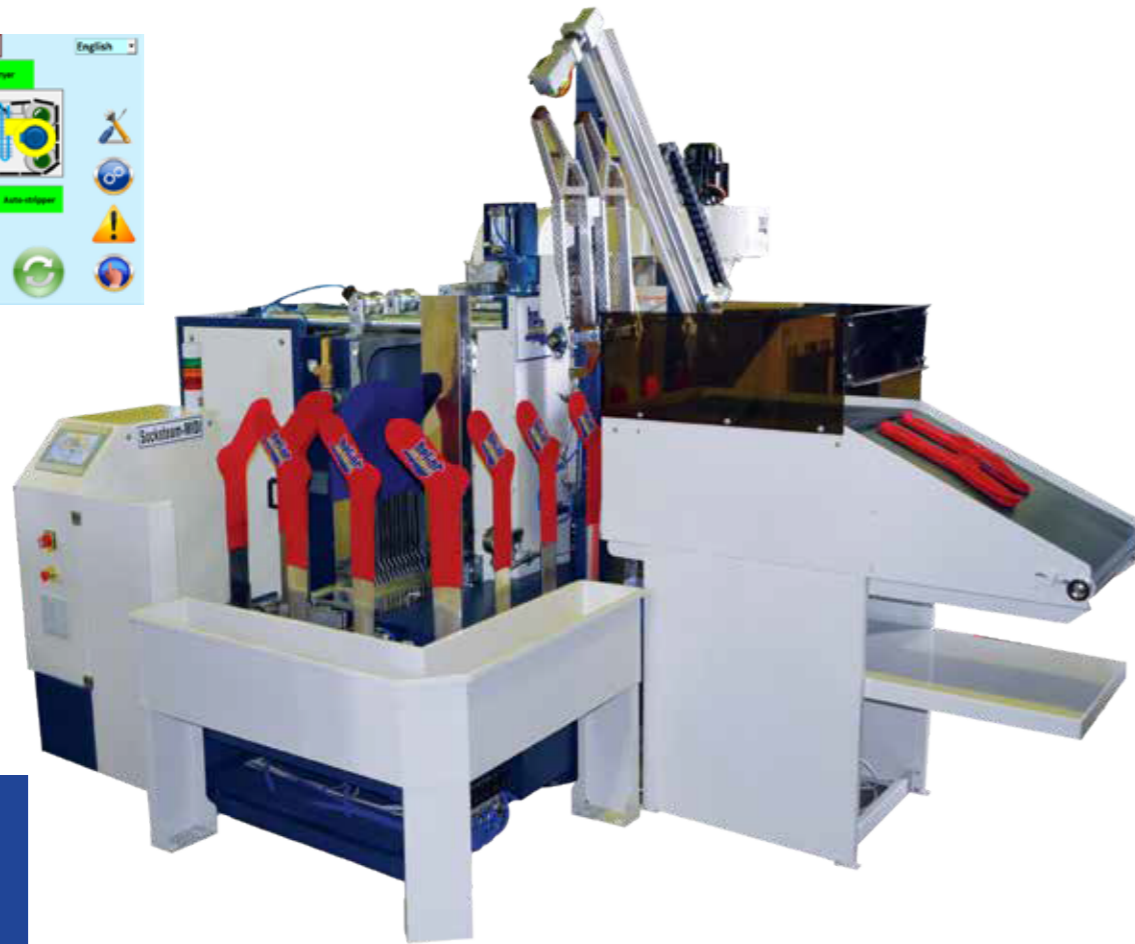
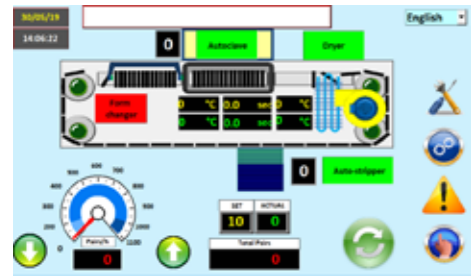


# SOCKSTEAM MIDI

1.100  
PAIRS/HOUR



Best treatment and productivity for top quality socks

Technical Data	Unit	Value
Length	mm	3.550
Width	mm	2.200 + conveyor (1.500)
Height	mm	2.650 + leveling blocks (80 mm)
Weight	kg	3.300
Average electric consumption	kW	1.2
Compressed air consumption	m <sup>3</sup> /h	9
Compressed air pressure	bar	6
Steam consumption	kg/h	25 to 55
Max. Capacity	pairs/hour	1.100
Process time at max. capacity	seconds	5-10
Dryer temperature	°C	160 max.
Form thickness	mm	4,2

# 64 FORMS

## OPTIMUM OPERATION

### LOADING :

2 operators can share the manual loading position for a production up to 1100 pairs of socks per hour.

### AUTOCLAVE :

The temperature and the process time for each of the four (4) batches of 16 forms is independetly adjustable thus allowing fine possibility of separate treatment for each batch inside the autoclave. For maximum production the real pressurized steam treatment time is approximately 5-10 seconds, at maximum speed. All the treatment data can be reproduced and ensures a consistent very high quality production.

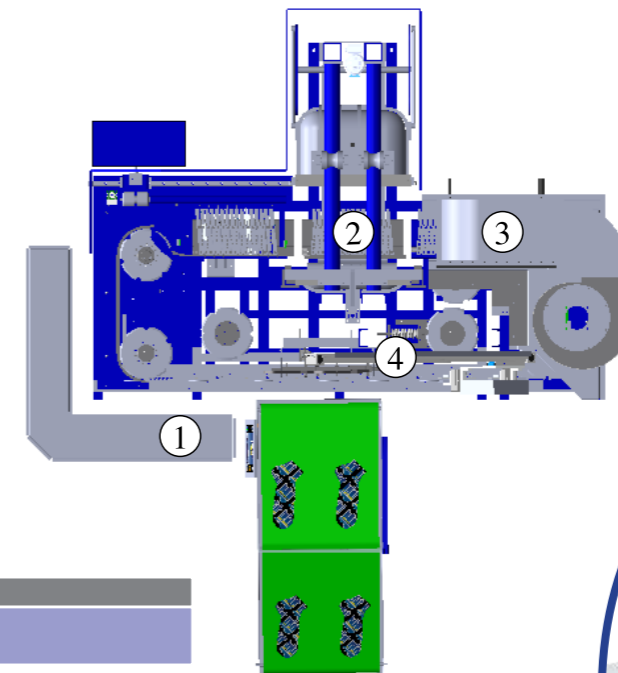
### DRYING:

The steam treatment is followed by a powerful drying process by means of hot air circulation.

### STRIPPING :

Grips seize the treated socks, two by two, and strip them from the forms while raising the socks toward the racket. The grips then open and free the socks, allowing the racket to push them flat onto a horizontal stacking conveyor.

The socks, stacked to a programmed number are then evacuated on to conveyor advancing forward.



## Description

1	Socks loading
2	3 bar horizontal autoclave
3	Drying chamber with economizer
4	Autostriper

## SOCKSTEAM MIDI : MOST RELIABLE, BEST PERFORMANCE

- \* Horizontal autoclave movement.
- \* Driving of forms by mechanical transfer.
- \* Improved stacking of the stripped socks thanks to increased stability provided by the servo-motor drive on the stripper.
- \* Longer pressurized steam treatment time for a deeper and more efficient treatment.
- \* Centralised automatic lubricating, more simple, more efficient and more reliable.

The 64 forms, without holders and easily changeable, make easier the treatment of different sock styles within each batch without losing time. The same forms are used on other HELIOT machines. The SOCKSTEAM MIDI is designed for intensive work under safe conditions. The machine is equipped with a programmable controller which controls permanently the safety device, stops the machine in case of defect and displays the cause of the fault.

# SOCKS BOARDING

# FOR SOCKS

# WITH 3 BAR STEAM PRESSURE

